

PART OF N.W. 1/4 OF
SECTION 29, T.7N., R.1W., S.L.B. & M.

51-4

IN TOWN OF PLEASANT VIEW

TAXING UNIT: 11

SCALE 1" = 100'

SEE BOOK 16, PAGE 37-3

WEBER COUNTY
170510068

PLEASANT VIEW EST. NO. 7
SEE P. 200

PLEASANT VIEW EST. NO. 6

SEE PAGES 205 & 206

3450 NORTH STREET

PLEASANT VIEW EST. NO. 5

3350 NORTH ST.

SEE P. 199

PLEASANT VIEW EST. NO. 1

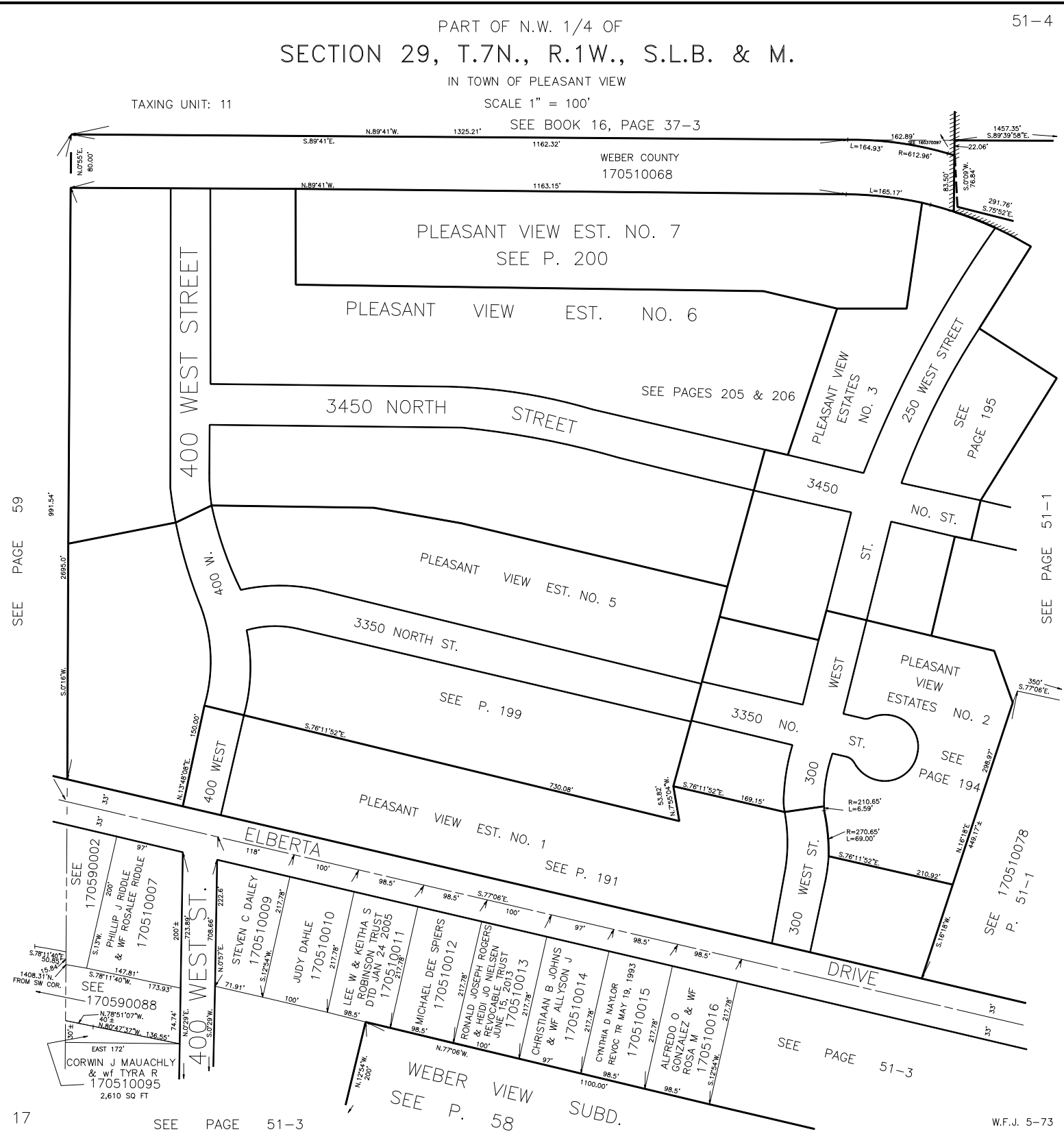
SEE P. 191

PLEASANT VIEW
ESTATES NO. 2
SEE
PAGE 194

SEE 170510078
P. 51-1

SEE PAGE 51-3

WEBER VIEW
SUBD.
SEE P. 58



SEE PAGE 59

SEE PAGE 51-1

17

SEE PAGE 51-3

W.F.J. 5-73